

DAY — 13

SEAT NUMBER

M 2 7 4 12 4

2023 III 10

1500

J-297

(E)

**BOOK KEEPING & ACCOUNTANCY (50)**

Time : 3 Hrs.

( 11 Pages )

Max. Marks : 80

**Q. 1. All objective questions are compulsory :**

[20]

(A) Write the word/phrase/term which can substitute each of the following statements :

(5)

- (1) Credit balance of profit and loss account.
- (2) Donation received for a specific purpose.
- (3) The ratio which is obtained by deducting old ratio from new ratio.
- (4) Expenses incurred on dissolution of firm.
- (5) Tally software is classified into this category.

(B) Calculate the following :

(5)

- (1) Calculate 12.5% p.a. depreciation on furniture
  - (a) On ₹ 2,20,000 for 1 year
  - (b) On ₹ 10,000 for 6 months
- (2) Library books ₹ \_\_\_\_\_ Less 10% depreciation  
₹ 5,000 = ₹ 45,000

0 2 9 7

(3) Apte and Bhate are sharing profits and losses in the ratio 3 : 2, if Kate is admitted at 1/4 share then calculate new profit sharing ratio.

(4) Ganesh draws a bill for ₹ 40,000 on 15<sup>th</sup> January, 2020 for 2 months. He discounted the bill with Bank of India @ 15% p.a. on the same day. Calculate the amount of discount.

(5) From the following information, calculate Current Assets :

Debtors ₹ 60,000, Creditors ₹ 30,000, Bills payable ₹ 20,000, Stock ₹ 30,000, Loose tools ₹ 10,000, Bank overdraft ₹ 10,000.

(C) Do you AGREE / DISAGREE with the following statements : (5)

(1) Partnership is an association of two or more persons.

(2) Not for profit concerns do not prepare Balance sheet.

(3) Retiring partner is not entitled to share in general reserve and accumulated profit.

(4) Dissolution takes place when the relation among the partners comes to an end.

(5) The Authorised Capital is also known as Nominal Capital.

(D) Select the most appropriate alternative from the following and rewrite the sentences : (5)

(1) Maximum number of partners in a firm are \_\_\_\_\_ according to the Companies Act 2013.

(a) 10 (b) 25

(c) 20 (d) 50

- (2) Income and expenditure account is a \_\_\_\_\_ account.
- (a) Capital (b) Real  
(c) Personal (d) Nominal
- (3) If asset is taken over by the partner \_\_\_\_\_ account is debited.
- (a) Revaluation (b) Capital  
(c) Asset (d) Balance sheet
- (4) Death is compulsory \_\_\_\_\_.
- (a) dissolution (b) admission  
(c) retirement (d) winding up
- (5) The person on whom a bill is drawn is called a \_\_\_\_\_.
- (a) drawee (b) payee  
(c) drawer (d) acceptor

Q.2. The following is the Balance sheet of partners Aditya and Chaitanya on 31<sup>st</sup> March, 2019, they share profits and losses in the ratio of 3 : 2 : [10]

**Balance Sheet as on 31<sup>st</sup> March, 2019**

Liabilities	Amount (₹)	Assets	Amount (₹)
Creditors	60,000	Building	30,000
Capital Accounts :		Furniture	1,800
Aditya	42,000	Machinery	42,000
Chaitanya	42,000	Stock	24,600
Current Accounts :		Debtors	54,000
Aditya	7,500	Cash	6,000
Chaitanya	6,900		
	<b>1,58,400</b>		<b>1,58,400</b>

Adjustments :

They admitted Sachin into partnership on 1<sup>st</sup> April, 2019 on the following terms :

- (1) Building to be valued at ₹ 36,000, machinery and furniture to be reduced by 10%.
- (2) Sachin should pay ₹ 6,000 as his share of Goodwill. 50% of goodwill withdrawn by partners in cash.
- (3) A provision of 5% on debtors to be made for doubtful debts.
- (4) He should bring ₹ 18,000 as capital for 1/4<sup>th</sup> share in future profit.
- (5) Stock is to be taken at the value of ₹ 30,000.

Prepare :

- (a) Profit and Loss Adjustment Account
- (b) Partners' Current Account.
- (c) Balance Sheet of the New Firm.

183720

OR

Given below is the Balance sheet of Amar, Akbar and Anthony who were sharing profits and losses equally :

**Balance Sheet as on 31<sup>st</sup> March, 2020**

Liabilities	Amount (₹)	Assets	Amount (₹)
Creditors	31,000	Cash	39,000
General Reserve	24,000	Debtors	32,000
Capital Accounts :		Less: R.D.D.	4,000
Amar	57,400	Furniture	30,000
Akbar	63,600	Machinery	80,000
Anthony	60,000	Motor Car	50,000
		Profit and Loss A/c	9,000
	<b>2,36,000</b>		<b>2,36,000</b>

Amar retired on 1<sup>st</sup> April, 2020 from the firm on the following terms :

- (1) Furniture to be valued at ₹ 28,000, Machinery ₹ 76,000 and Motor car ₹ 47,600.
- (2) R.D.D. to be maintained at 5% on debtors.
- (3) Goodwill of the firm is to be valued at ₹ 30,000. However, only Amar's share is to be raised in the books.
- (4) A part payment of ₹ 20,000 to be made to Amar and the balance to be transferred to his Loan Account.

Prepare : (1) Profit and Loss Adjustment A/c  
 (2) Partners' Capital Account  
 (3) Balance Sheet of the New firm.

**Q. 3.** Hema, Manisha and Limsy were in partnership firm sharing profits and losses in the ratio of 5 : 3 : 2. They decided to dissolve their partnership firm on 31<sup>st</sup> March 2019 and their Balance sheet as on that date stood as :

[10]

**Balance Sheet as on 31<sup>st</sup> March, 2019**

Liabilities	Amount (₹)	Assets	Amount (₹)
Capital Accounts:		Machinery	1,00,000
Hema	1,50,000	Debtors	50,000
Manisha	80,000	Stock	70,000
Reserve Fund	10,000	Cash at bank	30,000
Sundry Creditors	20,000	Limcy Capital A/c	20,000
Bills payable	10,000		
	<b>2,70,000</b>		<b>2,70,000</b>

The firm was dissolved on 31<sup>st</sup> March, 2019 and assets were realised as under :

- (1) Machinery realised 60% of its book value.
- (2) Out of debtors, Mr. Jagdish, our customer for ₹ 20,000 was declared insolvent and nothing could be recovered from him. Other debtors are good and recovered and realised.
- (3) Hema took stock at an agreed value of ₹ 50,000.
- (4) Creditors and Bills payable were paid at 10% discount.
- (5) Limsy became insolvent and nothing was recovered from her estate.

Prepare :

- (a) Realisation Account
- (b) Partners' Capital Account
- (c) Bank Account

**OR**

✓ Rajesh sold goods on credit to Sulochana for ₹ 25,000. Rajesh draws a bill for ₹ 25,000 on Sulochana for 3 months. Rajesh discounted the bill with his bank @ 10% p.a. on the same day. On the due date of bill, Sulochana requested Rajesh to accept ₹ 5,000 including ₹ 1,000 for interest and to draw a bill for the balance for 3 months. Rajesh agreed to this proposal. One month before the due date, Sulochana retired the bill for ₹ 20,200.

Pass necessary Journal Entries in the books of Rajesh.

Q. 4. Sameer and Company Limited invited applications for 25,000 Equity shares of ₹ 100 each payable as :

[8]

- ₹ 25 on application
- ₹ 50 on allotment
- ₹ 25 on first and final call

Applications were received for 30,000 Equity shares and pro-rata allotment were made to all. All the money was duly received except first and final call on 2,500 Equity shares.

Enter the above transactions in the books of Sameer and Company Limited.

OR

Give comparison between Manual Accounting Process and Computerized Accounting Process.

- Q. 5. ✓ Arun, Varun and Karun were partners in a business sharing profits and losses in the ratio of 2 : 2 : 1 respectively. Their Balance sheet as on 31<sup>st</sup> March, 2019 was as under : [8]

Balance Sheet as on 31<sup>st</sup> March, 2019

Liabilities	Amount (₹)	Assets <sup>62280</sup>	Amount (₹)
Capital Accounts :		Land and Building	27,900
Arun	20,000	Investment	15,000
Varun	20,000	Furniture	8,000
Karun	10,000	Debtors	10,400
Creditors	16,000	Less : R. D. D.	400
Bank Loan	4,000	Bank	4,100
		Goodwill	5,000
	<b>70,000</b>		<b>70,000</b>

On 1<sup>st</sup> July, 2019 Karun died and the following adjustments were made :

- (1) All the debtors were considered as good.
- (2) Bank Loan were paid off.
- (3) Furniture was depreciated by ₹ 550.

- (4) Investments were sold out in the Market at 10% profit.
- (5) Goodwill of the firm was valued at ₹ 7,500. It was to be raised in the books.
- (6) Karun was entitled to get his share in the profit up to the date of his death. Profit for 2019-2020 was estimated at ₹ 5,000.
- (7) The amount due to Karun's Executor was paid by NEFT.

Prepare :

- (a) Profit and Loss Adjustment A/c
- (b) Partners' Capital Account
- (c) Balance sheet of New Firm.

**OR**

Convert following Trading Account and Profit and Loss Account into Vertical Income Statement :

**Trading, Profit and Loss Account**  
for the year ended as on 31<sup>st</sup> March, 2020

Dr.

Cr.

Particulars	Amount (₹)	Particulars	Amount (₹)
To Opening stock	20,000	By Sales	1,20,000
To Purchases	90,000	By Closing Stock	30,000
To Carriage inward	500		
To Wages	10,000		
To Gross Profit c/d	29,500		
<b>Total</b>	<b>1,50,000</b>	<b>Total</b>	<b>1,50,000</b>
To Office expenses	12,500	By Gross Profit b/d	29,500
To Selling expenses	10,000		
To Finance expenses	3,000		
To Net Profit c/d	4000		
	<b>29,500</b>		<b>29,500</b>

- Q. 6. From the following Receipts and Payments Account of "Matsyodari Engineering College, Aurangabad" for the year ending on 31<sup>st</sup> March, 2020 and additional informations, prepare Income and Expenditure Account for the year ending 31<sup>st</sup> March, 2020 and Balance Sheet as on that date : [12]

**Receipts and Payments Account**  
Dr. for the year ended 31<sup>st</sup> March, 2020 Cr.

Receipts	Amount (₹)	Payments	Amount(₹)
To Balance b/d		By Salaries to	
Cash in hand	8,000	Teaching Staff	10,00,000
Cash at bank	1,00,000	By Electricity charges	50,000
To Interest	50,000	By Books ✓	64,000
To Subscription	30,000	By Furniture ✓	55,000
To Life Membership Fees	40,000	By Stationary	24,000
To Donation	5,00,000	By Fixed Deposit ✓	7,00,000
To Tution fees	11,50,000	By Balance c/d	
To Term fees	2,00,000	Cash in hand	20,000
To Sundry Receipts	10,000	Cash at Bank	2,25,000
To Admission Fees (Revenue)	50,000		
	<b>21,38,000</b>		<b>21,38,000</b>

Additional information :

Particulars	01.04.2019	31.03.2020
Books	7,00,000	7,00,000
Furniture	3,19,000	3,00,000
Building fund	10,00,000	?
Fixed Deposit	9,10,000	?
Capital Fund	10,37,000	?

Adjustments :

(1) 50% Donations are for Building fund and the balance is to be treated as Revenue Income.

(2) Outstanding subscription ₹ 5,300.

(3) Life Membership fees are to be capitalised.

2880300

Q. 7. Varsha and Harsha are partners sharing profits and losses in their capital ratio. You are required to prepare Trading Account, Profit and Loss Account for the year ending 31<sup>st</sup> March, 2020 and Balance sheet as on that date : [12]

Trial Balance as on 31<sup>st</sup> March, 2020

Debit Balance	Amount (₹)	Credit Balance	Amount (₹)
Sundry Debtors	56,000	Sales	2,40,000
Purchases	1,10,000	Sundry Creditors	99,600
Plant and Machinery	1,60,000	Purchase Return	2,000
Furniture	1,05,800	Capital Accounts :	
Salaries	8,600	Varsha	1,80,000
Sales Return	1,000	Harsha	60,000
Cash in hand	1,02,000	Current Accounts :	
Opening Stock	35,600	Varsha	10,000
Rent, Rates & Taxes	9,000	Harsha	6,000
Advertisement	9,600		
	<b>5,97,600</b>		<b>5,97,600</b>

Adjustments :

- (1) Stock on 31st March, 2020 was valued at ₹ 74,000.
- (2) Depreciation on Plant and Machinery @ 5% p.a.
- (3) Partners are entitled to get Interest on Capital at 5% p.a.
- (4) Outstanding expenses : Salaries ₹ 700. 488120
- (5) Provide further Bad debts of ₹ 1,680 on Sundry debtors.



DAY — **15**

SEAT NUMBER

--	--	--	--	--	--

2023 III 13

1500

**J-314**

(E)

**ECONOMICS (49)**

Time : 3 Hrs.

(8 Pages)

Max. Marks : 80

- Notes :* (1) All questions are compulsory.  
(2) Draw neat tables / diagrams wherever necessary.  
(3) Figures to the right indicate full marks.  
(4) Write answers to all main questions on new pages.

**Q. 1. (A)** Complete the following sentences :

(5) [20]

- (i) Micro Economics is also called as \_\_\_\_\_.  
(a) Income theory  
(b) Price theory  
(c) Growth theory  
(d) Employment theory
- (ii) Money market faces shortage of funds due to \_\_\_\_\_.  
(a) Inadequate savings  
(b) Growing demand for cash  
(c) Unorganized sector  
(d) Financial mismanagement

0 3 1 4

- (iii) Marginal utility of the commodity becomes negative when Total Utility of a commodity is \_\_\_\_\_.  
(a) rising  
(b) constant  
(c) falling  
(d) zero
- (iv) Public expenditure of any government shows \_\_\_\_\_.  
(a) constant trend  
(b) increasing trend  
(c) decreasing trend  
(d) fluctuating demand
- (v) The relationship between income and demand for inferior goods is \_\_\_\_\_.  
(a) direct  
(b) inverse  
(c) no effect  
(d) can be direct and inverse

**(B)** Find the odd word out : (5)

(i) Revenue concepts :

Total Revenue, Average Revenue, Total Cost, Marginal Revenue.

(ii) Quantitative Tools of credit control :

Bank rate, Open market operations, Foreign Exchange rate, Variable reserve ratio.

(iii) Scope of Micro Economics :

Theory of product pricing, Theory of factor pricing, Theory of Economic growth and Development, Theory of Economic welfare.

(iv) Non-tax revenue :

Fees, Penalty, Wealth tax, Special levy.

(v) Types of Simple Index Number :

Laspeyre's Price Index Number, Price Index Number,  
Quantity Index Number, Value Index Number.

(C) Give economic term :

(5)

(i) The volume of commodities and services turned out during a given period counted without duplication.

(ii) A desire which is backed by willingness to purchase and ability to pay.

(iii) Degree of responsiveness of a change of quantity demanded of a good to a change in its price.

(iv) Very realistic competition in nature.

(v) Swati purchased raincoat for her father in rainy season.

(D) Assertion and reasoning questions :

(5)

(i) Assertion (A) : In perfect competition, price is determined by the forces of demand and supply.

Reasoning (R) : The number of buyers and sellers is so large that one person can not influence prices.

Options :

(1) (A) is true, but (R) is false.

(2) (A) is false, but (R) is true.

(3) Both (A) and (R) are True and (R) is the correct explanation of (A).

(4) Both (A) and (R) are True and (R) is not the correct explanation of (A).

(ii) Assertion (A) : A change in quantity demanded of one commodity due to a change in the price of other commodity is cross elasticity.

Reasoning (R) : Changes in consumers' income leads to a change in the quantity demanded.

Options :

- (1) (A) is true, but (R) is false.
- (2) (A) is false, but (R) is true.
- (3) Both (A) and (R) are True and (R) is the correct explanation of (A).
- (4) Both (A) and (R) are True and (R) is not the correct explanation of (A).

(iii) Assertion (A) : Production for self-consumption is not accounted for in the national income.

Reasoning (R) : The products kept for self consumption do not enter the market.

Options :

- (1) (A) is true, but (R) is false.
- (2) (A) is false, but (R) is true.
- (3) Both (A) and (R) are True and (R) is the correct explanation of (A).
- (4) Both (A) and (R) are True and (R) is not the correct explanation of (A).

(iv) Assertion (A) : Foreign exchange management and control is undertaken by commercial banks.

Reasoning (R) : RBI has to maintain the official rate of exchange of rupee and ensure its stability.

Options :

- (1) (A) is true, but (R) is false.
- (2) (A) is false, but (R) is true.
- (3) Both (A) and (R) are True and (R) is the correct explanation of (A).
- (4) Both (A) and (R) are True and (R) is not the correct explanation of (A).

- (v) Assertion (A) : Supply is a relative term.  
Reasoning (R) : Supply is always expressed in relation to price, time and quantity.

Options :

- (1) (A) is true, but (R) is false.
- (2) (A) is false, but (R) is true.
- (3) Both (A) and (R) are True and (R) is the correct explanation of (A).
- (4) Both (A) and (R) are True and (R) is not the correct explanation of (A).

**Q. 2. (A)** Identify and explain the following concepts (Any THREE) : (6) [12]

- (i) A table seller sold the table for ₹ 2,000 per piece. In this way he sold 15 tables and earned ₹ 30,000.
- (ii) England imported cotton from India, made readymade garments from it and sold them to Malaysia.
- (iii) Ashok paid the tax on his income and property.
- (iv) Raju's father invests his money in a market for long term funds both equity and debt raised within and outside the country.
- (v) A poor person wants to buy a car.

**(B)** Distinguish between (Any THREE) : (6)

- (i) Unitary elastic demand and Relatively elastic demand
- (ii) Output method of measuring national income and Income method of measuring national income
- (iii) Demand deposit and Time deposit
- (iv) Simple index number and Weighted index number.
- (v) Stock and Supply

**Q. 3. Answer the following (Any THREE) :**

**[12]**

- ✓ (i) Explain any four points of importance of Micro economics.
- (ii) Explain the Ratio or percentage method of measuring price elasticity of demand.
- ✓ (iii) Explain any four features of national income.
- (iv) Explain any four problems faced by the money market in India.
- ✓ (v) Explain any four exceptions of the law of Diminishing marginal utility.

**Q. 4. State with reasons whether you agree or disagree with the following statements (Any THREE) :**

**[12]**

- ✓ (i) There are no exceptions to the law of supply.
- (ii) Balance of Trade and Balance of Payment are two different concepts.
- (iii) Index numbers are very significant / important in economics.
- ✓ (iv) There are no theoretical difficulties in the measurement of National Income.
- ✓ (v) Macro economics is different from Micro economics.

**Q. 5. Study the following table, figure, passage and answer the questions given below it (Any TWO) :**

**[8]**

- (i) Observe the following table and answer the questions given below it :

**(4)**

Unit of commodity	Total Utility (TU) units	Marginal Utility (MU) units
1	6	<input type="text"/>
2	<input type="text"/>	5
3	15	4
4	15	<input type="text"/>
5	<input type="text"/>	-1

0 3 1 4

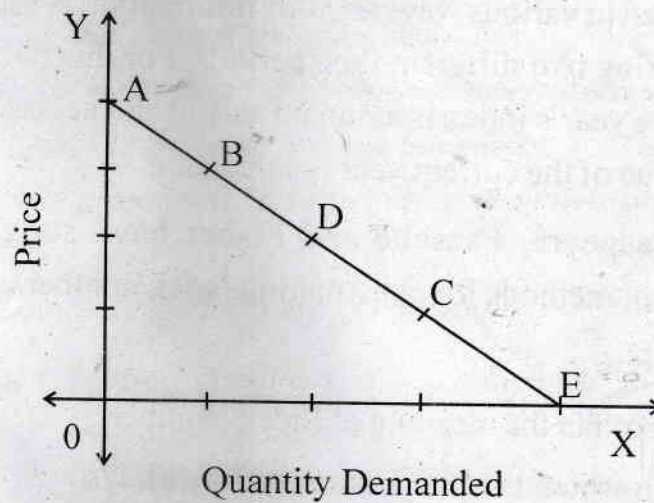
Questions :

(1) Complete the above table. (2)

(2) (a) When total utility is Maximum, the marginal utility is -  (1)

(b) When total utility falls, the marginal utility becomes -  (1)

(ii) In the following diagram AE is the linear demand curve of a commodity. On the basis of the given diagram state whether the following statements are True or False : (4)



(1) Demand at point 'C' is relatively elastic demand. (1)

(2) Demand at point 'B' is unitary elastic demand. (1)

(3) Demand at point 'D' is perfectly inelastic demand. (1)

(4) Demand at point 'A' is perfectly elastic demand. (1)

(iii) Read the given passage and answer the questions : (4)

Index Number is a technique of measuring changes in a variable or group of related variables with reference to time, geographical location and other characteristics.

Index Number is very useful for economists, farmers, traders, government, educationalists and trade union leaders for planning and implementing the plans according to their sector.

The scope of index number is not limited to only one subject but it extends to many subjects such as Economics, Educational science, Psychology, History, Sociology, Geography etc.

While framing index number its objective must be determined. To attain the objective the information is collected in various ways and this information is used for comparing two different time periods. For this purpose, the base year's index is assumed as 100 and accordingly the value of the current year is calculated.

Laspeyre, Paasche and Fisher have suggested different methods for constructing index numbers.

Questions :

- (1) Explain the meaning of Index Number. (1)
- (2) To whom the Index Number is useful? (1)
- (3) Express your opinion about the given passage. (2)

**Q. 6. Answer the following questions in detail (Any TWO) : [16]**

- (i) State and explain the law of demand with exceptions.
- (ii) Explain the meaning of Monopoly with its features.
- (iii) Explain various reasons for the growth of public expenditure.



DAY — 01

SEAT NUMBER

--	--	--	--	--	--

2023 II 21

1100

J-201

(E)

**ENGLISH (01)**

Time : 3 Hrs.

(16 Pages)

Max. Marks : 80

**Important instructions :**

- (1) Each activity has to be answered in complete sentence/s. One word answers will not be given complete credit. Just the correct activity number written in case of options will not be given credit.
- (2) Web diagrams, flow charts, tables etc. are to be presented exactly as they are with answers.
- (3) In point 2 above, just words without the presentation of the activity format/design, will not be given credit. Use of colour pencils/pens etc. is not allowed. (Only blue/black pens are allowed.)
- (4) Multiple answers to the same activity will be treated as wrong and will not be given any credit.
- (5) Maintain the sequence of the Sections/Question Nos./Activities throughout the activity sheet.

**SECTION - I : PROSE**

(Reading for Comprehension, Language Study,  
Summary and Mind Mapping)

Q. 1. (A) Read the extract and complete the activities given below : (12) [16]

I was quite happy getting into IIT, but my joy was short-lived. At Solapur, I had not seen any building which

0	2	0	1
---	---	---	---

was more than three storeyed. Mumbai however was full of skyscrapers. At IIT, most of the students and professors used to converse in English whereas my English was very poor. I had my entire education in Marathi. My spoken English was quite pathetic. Not only did I have a very weak vocabulary, but, my pronunciation also was terrible and my construction of English sentences very awkward to say the least. Due to all this, I was feeling quite lonely and terrified in Mumbai in general and IIT in particular. I had developed an inferiority complex and wanted to run away from IIT and even Mumbai.

One day, I was sitting at my mess table in the hostel sipping tea when a senior guy came and sat on the chair adjacent to me. He was a convent educated guy with fairly sophisticated English – at least spoken or colloquial English. He was a bit arrogant and wanted to pull my leg. He tried to engage in some conversation with me and started pointing out errors in just about every sentence or everything that I said. After about 5 minutes he walked away after insulting me.

I felt extremely humiliated and upset. As it is, I was feeling quite depressed and diffident and this incident was the last straw. I was almost broken. I felt out of place there and literally wanted to run away to Solapur that very moment. However, it was only my self-esteem which stopped me. Suddenly, a feeling of determination and strength came over me and gripped me.

A1. Choose and rewrite the two correct statements from the following : (2)

- (a) The writer had his entire education in English.
- (b) The writer wished to run away from IIT and even Mumbai.

- (c) The senior guy was co-operative and he encouraged the writer.
- (d) The writer could overcome his feeling of depression with his own efforts.

A2. The writer developed an inferiority complex during his stay in Mumbai. Enlist the causes : (2)

- (a) ..... (b) .....
- (c) ..... (d) .....

A3. Point out the qualities of the writer that you have come across while reading the extract. (2)

- Negative qualities : (i) .....  
(ii) .....
- Positive qualities : (i) .....  
(ii) .....

A4. Give any four suggestions to improve English communication skills. (2)

A5. Language study : (2)

- (i) 'I was quite happy getting into IIT, but my joy was short-lived'.....

(Choose the correct alternative showing proper use of 'though')

- (a) Though I was quite happy getting into IIT, but my joy was short-lived.
- (b) I was quite happy getting into IIT, though my joy is short-lived.
- (c) Though I was quite happy getting into IIT, my joy was short-lived.
- (d) I was quite happy though getting into IIT, my joy was short-lived.

- (ii) 'I felt extremely humiliated and upset.'  
(Identify the correct exclamatory form of the above sentence.)

- (a) What humiliated and upset I felt !

- (b) How humiliated and upset I felt !
- (c) How extremely humiliated do I feel !
- (d) What a humiliated and upset I felt !

A6. Match the following words in column 'A' with their antonyms in column 'B'. (2)

Column 'A'	Column 'B'
(a) diffident	(i) humble
(b) humiliated	(ii) superiority
(c) arrogant	(iii) confident
(d) inferiority	(iv) exhilarated

B1. Non-Textual Grammar — (3)

Do as directed :

- (i) Both the partners have signed this agreement in haste. (1)  
 (Identify the correct 'Passive Voice' form of the above sentence from the alternatives given below)
- (a) This agreement had been signed in haste by both the partners.
  - (b) This agreement has been signed in haste by both the partners.
  - (c) This agreement have been signed in haste by both the partners.
  - (d) This agreement was signed in haste by both the partners.
- (ii) I asked my sister, "What can I do for you in this matter?" (1)  
 (Identify the correct 'Indirect Speech' form of the above sentence from the alternatives given below)
- (a) I asked my sister what I could do for her in that matter.
  - (b) He asked his sister what he could do for her in that matter.

- (c) I asked my sister what he could do for her in this matter.
- (d) He asked my sister what she could do for her in that matter.
- (iii) As soon as he left the house, he met with an accident. (1)  
(Identify the correct 'No sooner. . . . than' form of the above sentence from the alternatives given below.)
- (a) No sooner does he leave the house than he met with an accident.
- (b) No sooner had he left the house than he met with an accident.
- (c) No sooner did he leave the house than he met with an accident.
- (d) No sooner do he leave the house than he met with an accident.

B2. Spot the error in the given sentence and rewrite the correct sentence.

She has been worked in this office since 1996. (1)

Q. 2. (A) Read the following extract and complete the activities given below : (12) [18]

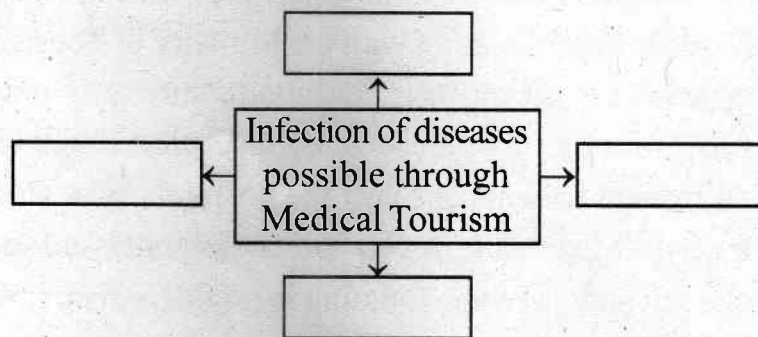
The government of India is encouraging medical tourism in the country by offering tax benefits and export incentives to the participating hospitals. Medical visas are being cleared quickly without any hassles. With a view to facilitating the growth of medical tourism industry, the Ministry of Health and Family Welfare along with the Ministry of Tourism has set up a task force to evaluate the opportunities in the industry. Efforts are being made to standardise procedures and to guide foreign patients to select the hospitals most suited to their needs. Meanwhile, several private hospitals are seeking to take advantage of the booming medical tourism industry and are investing hugely in acquiring equipments and skills.

However, medical tourism carries some risks that locally provided medical care does not. Some countries like India, Malaysia and Thailand have very different infectious diseases rarely found in Europe and North America. Exposure to diseases without having built-up natural immunity can be a hazard for weak individuals specially with respect to gastrointestinal diseases like Hepatitis A, amoebic dysentery etc., which could slow down the recovery process. Also, medical tourists may be at risk from mosquito-transmitted diseases, influenza and tuberculosis. The quality of post-operative care can also vary dramatically depending on the hospital and the country. Finally, after returning home, a patient has a limited contact with their surgeon. This may make it difficult to deal with any complications that may arise later, such as a delayed infection.

The concept of medical tourism raises some important questions regarding accessibility, affordability and ethics in medical care. It is unfortunate that a large section of the Indian population has little or no access to private health care. Public health care system is inadequate and lacks proper infrastructure and facilities. One wonders if it is sensible to make provisions for medical tourism in a democratic country like India, which has failed to provide nourishment, sanitation and health care to its masses.

A1. Complete the web :

(2)



A2. Complete the following statements with the help of information provided in the extract : (2)

- (i) Building up natural immunity is must for all because .....
- (ii) The concept of medical tourism can not be much successful in India because .....

A3. Complete the following table with reference to the statement 'Medical Tourism is a mixed blessing' : (2)

Positive aspects of Medical Tourism		Hazard/Negative aspects of Medical Tourism	
1		1	
2		2	

A4. 'We need to promote the concept of Wildlife Tourism in India'. State whether you agree or disagree with the statement. Mention any two arguments. (2)

A5. Language study : (2)

- (i) 'Govt. of India is encouraging medical tourism in the country'. (Choose the correct present perfect form of the given statement.)
- (a) Govt. of India is encouraged medical tourism in the country.
- (b) Govt. of India had encouraged medical tourism in the country.
- (c) Govt. of India has been encouraged medical tourism in the country.
- (d) Govt. of India has encouraged medical tourism in the country.

- (ii) 'This may make it difficult to deal with any complication'.

(Identify the replaced version of the statement using the auxiliary of certainty or definiteness.)

- (a) This can make it difficult to deal with any complication.
- (b) This might make it difficult to deal with any complication.
- (c) This will make it difficult to deal with any complication.
- (d) This have made it difficult to deal with any complication.

A6. Identify the words from the passage with the following meaning : (2)

- (i) growing immensely
- (ii) threat
- (iii) obtaining
- (iv) able to approach/possible to approach

**(B) Summary Writing :** (3)

Write a summary of the above extract with a suitable title, with the help of the given points/hints.

- Govt. of India promoting medical tourism.....
- Side effects of the medical tourism – Response of the Indian population – Prospects of medical tourism in India.

**(C) Mind Mapping :** (3)

Prepare a mind map on the topic 'Human Interest' using your ideas, flow, design and structure.

**SECTION - II : POETRY**

**(Poetry and Appreciation)**

**Q. 3. (A)** Read the following extract and complete the activities given below :

**(10) [14]**

'Canst hear', said one, 'the breakers roar?  
For methinks we should be near the shore'.  
'Now where we are I cannot tell,  
But I wish I could hear the Inchcape Bell'.

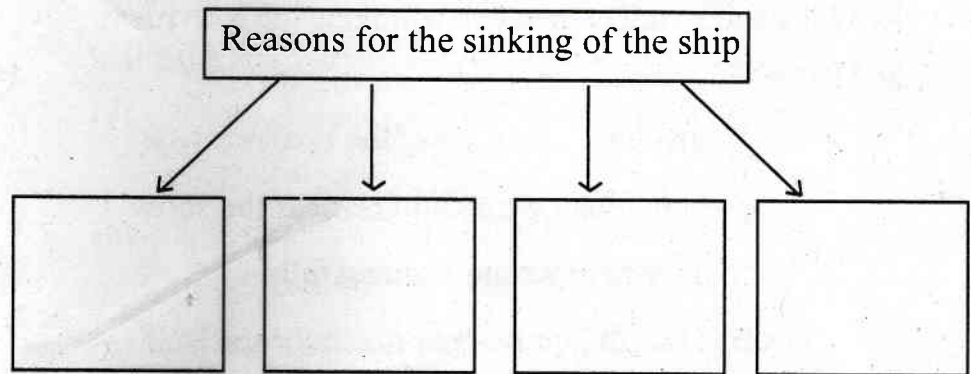
They hear no sound, the swell is strong;  
Though the wind hath fallen they drift along,  
Till the vessel strikes with a shivering shock,  
'O Christ! it is the Inchcape Rock!''

Sir Ralph the Rover tore his hair;  
He curst himself in his despair;  
The waves rush in every side,  
The ship is sinking beneath the tide.

But even in his dying fear  
One dreadful sound could the Rover hear,  
A sound as if with the Inchcape Bell,  
The Devil below was ringing his knell.

- A1.** Rearrange the following incidents as per their occurrence in the poem : **(2)**
- (a) Sir Ralph the Rover cursed himself in despair.
  - (b) The vessel strikes with a shivering shock.
  - (c) The mariner wished to hear the Inchcape Bell.
  - (d) Ralph the Rover heard one dreadful sound.

- A2. Complete the tree diagram to describe the reasons that resulted in the sinking of the ship. (2)



- A3. Accept any reasonably correct answer. (2)

- A4. Poetic devices : (2)

The figure of speech — ‘Inversion’ the word order is changed for rhyme. Correct order should be :  
‘The Rover could hear one dreadful sound.’

- A5. Composing lines : (2)

[Accept any reasonably correct answer/lines]

- (B) Appreciation : (4)

Write the poetic appreciation of the extract given below:

She walks in beauty, like the night  
Of cloudless climes and starry skies;  
And all that’s best of dark and bright  
Meet in her aspect and her eyes;  
Thus mellowed to that tender light  
Which heaven to gaudy day denies.

One shade the more, one ray the less,  
Had half impaired the nameless grace  
Which waves in every raven trees,  
Or softly lightens o’er her face;

Where thoughts serenely sweet express,  
How pure, how dear their dwelling-place.

And on that cheek, and o'er that brow,  
So soft, so calm, yet eloquent,  
The smiles that win, the tints that glow,  
But tell of days in goodness spent,  
A mind at peace with all below,  
A heart whose love is innocent !

### SECTION - III

#### (Writing Skill)

**Q. 4. (A)** Complete the activities as per the instructions given below : (4) [16]  
Attempt Any One of the following activities –

(1) Drafting virtual message :

Imagine yourself as Ramesh. You are required to go to Pune to participate in the national level Chess Competition and hence you won't be able to attend the class-test. Draft a virtual message for your friend Sanket in about 50 to 75 words asking him to convey the reason of your absence to your subject teacher.

**OR**

(2) Statement of Purpose :

You have a special interest in journalism. You are planning to go for a degree-course in mass-communication and work in future especially in the field of crime-reporting. You have heard about the reputed 'Royal Institute of Mass-communication' in the United Kingdom. Prepare a statement of purpose in about 150 words to get admission in the Institute.

**OR**

(3) Group Discussion :

Imagine yourself as a participant in a group discussion arranged by an NGO working to promote swadeshi. The topic is 'Traditional food provide more nutrition to the children as compared to the junk food'.

There are two more participants and evaluator to share their views. Prepare a set of dialogues.

(B) Attempt 'Any One' of the following activities :

(4)

E-mail writing :

- (1) You are looking forward to start a Computer Institute in your area. You initially need 20 PCs. Prepare / Draft an E-mail to the city-dealer of DELL Computers demanding a moderate quotation for the same. (in about 100-150 words).

**OR**

Report Writing :

- (2) Your college has celebrated '75<sup>th</sup> Anniversary of our National Independence' by organising various socio-cultural activities between 13<sup>th</sup> and 16<sup>th</sup> August. Imagine yourself as G.S. (General Secretary) of your jr. college and draft a brief report of the celebration/ programme for the local newspapers in about 150 words.

**OR**

Drafting Interview Questions :

- (3) One of the Ex-students from your college has recently been selected for the prestigious NDA (National Defence Academy). He is specially invited to motivate the aspiring students of your jr. college. Imagine yourself as an interviewer and prepare a set of 8 (eight)

interview questions enabling your guest to share his experiences and opinions.

You may take help of the following points to draft your questions maintaining a proper sequence :

<ul style="list-style-type: none"><li>● Name of the interviewee (Personality)</li><li>● Area of Success/Reputation</li><li>● Date / Venue / Time</li><li>● Duration of Interview</li><li>● His decision</li><li>● His idols/inspirations</li><li>● Support</li><li>● Training</li><li>● Difficulties</li><li>● Challenges / Motivating experiences</li><li>● Goals / Expectations</li><li>● Message</li></ul>	
---	--

(C) Attempt 'Any One' of the following activities :

(4)

Speech Writing :

- (1) You are an active member of an NGO working for water-conservation. Prepare a speech for the school children / students where you are invited on the eve of 'World Environment Day' to guide them about water-harvesting. Your speech should not exceed 150 words.

OR

(2) Compering :

Imagine your school / jr. college has organised a farewell function for the students appearing for H.S.C. examination. As a compere draft a script for the whole function maintaining the sequence of the following points :

- Welcoming the guests
- Introduction
- Felicitation
- Important speeches
- Concluding remark
- Vote of thanks

**OR**

Expansion of Idea :

(3) Expand the following idea with the help of the points given below (100-150 words) –

“Experience is the best teacher”

- It's practical and not theoretical experience
- Learn from situations
- Direct and first hand knowledge
- Real life versus Bookish

**(D)** Attempt Any One of the following activities :

(4)

(1) Drafting a Review :

Draft a review of any film/movie that you have recently watched. Prepare your review with the help of given points.

- Name of the movie/year of release
- Producer/Director
- Cast
- Technical aspects : Music/photography
- Theme/storyline in brief
- Your opinion

**OR**

Blog writing :

- (2) Write/prepare a blog in about 150 words on the topic 'Social media is spoiling the spirit of Education'. Focus on the adverse/negative effects/influence of social media apps on the students' minds.

**OR**

Preparing an Appeal :

- (3) Prepare an appeal inviting the students to respond to the "Voters' Registration Camp" specially organised by the State Election Commission on the eve of 75<sup>th</sup> Anniversary of our National Independence.
- Give appropriate slogan
  - Poor turn-out/low awareness
  - Statement of appeal
  - Arrangement of a special camp
  - Guest/Time/Date/Venue

**SECTION - IV**

**(LITERARY GENRE - NOVEL)**

**Q. 5. (A) Complete the activities given below as per the instructions : (4) [16]**

- (i) Match the following items from column-A with those from the column-B : (2)

Column 'A'

Column 'B'

- |                            |                   |
|----------------------------|-------------------|
| (a) Oroonoku               | (i) Joseph Conard |
| (b) The Heart of Darkness  | (ii) John Bunyan  |
| (c) Frankenstein           | (iii) Aphra Behn  |
| (d) The Pilgrim's Progress | (iv) Mary Shelly  |

- (ii) Choose the correct alternatives and complete the given statements : (2)

- (a) Novels with the elements of horror, blood-shed and mystery are called \_\_\_\_\_ novels.  
(Realistic, Gothic, Psychological)

0 2 0 1

- (b) The German word 'bildungsroman' indicates \_\_\_\_.  
(Letter, New, Growth)
- (c) There are \_\_\_\_\_ essential elements of 'Novel' or 'Novella'.  
(six, eight, eleven)
- (d) Struggle between the opposite forces in the story is called \_\_\_\_\_.  
(plot, conflict, setting)

**(B)** Activities based on the extract of the novel 'To Sir, With Love' (answer in about 50 words) : **(4)**

- (i) Give the character-sketch of E.R. Braithwaite (the narrator). **(2)**
- (ii) Describe how Miss Philips justifies the importance of P.T. to Denham. **(2)**

**(C)** Activities based on the extract of the novel 'Around the World in Eighty Days' (Answer in about 50 words) : **(4)**

- (i) Elaborate the following quote in the light of Phileas Fogg's Venture .....  
'Quitters never win and Winners never quit.' **(2)**
- (ii) Phileas Fogg knocked detective fix down –  
Give reason/s. **(2)**

**(D)** Activities based on the extract of the novel 'The Sign of Four' (Answer in about 50 words) : **(4)**

- (i) Describe the significance of Mary Morstan's visit to the Lyceum Theatre with Holmes and Dr. Watson. **(2)**
- (ii) Write in brief the theme of the extract of the novel 'The Sign of Four' **(2)**



DAY — 03

SEAT NUMBER

M 2 7 3 5 8 7

2023	II	23	1100	J-209	(M)
<b>MARATHI (02)</b>					
Time : 3 Hrs.		(11 Pages)		Max. Marks : 80	

**कृतिपत्रिका**

कृतिपत्रिकेसाठी सूचना :

- (१) आकलन कृती व व्याकरण यांमधील आकृत्या किंवा चौकटी पेनाने अथवा पेन्सिलीने व्यवस्थित काढाव्यात.
- (२) स्वच्छता, नीटनेटकेपणा व लेखननियमांनुसार लेखन यांकडे जाणीवपूर्वक लक्ष द्यावे.

**विभाग १ - गद्य**

[२०]

कृती १. (अ) खालील उताऱ्याच्या आधारे सूचनेनुसार कृती करा :

(८)

(१) लेखकाने सांगितलेल्या आनंदाच्या गंमती -

(य) .....

(२)

(र) .....

(२) (य) आनंदाविषयी उताऱ्यात आलेली काव्यपंक्ती -

(२)

(र) प्रस्तुत काव्यपंक्तीविषयी लेखकाने व्यक्त केलेले मत -

आनंद सगळ्यांनाच हवा असतो... पण आपला आनंद नेमका कशात आहे, हे अनेकांना कळत नसतं. आनंद म्हणजे नेमकं काय हेही उलगडलेलं

0 2 0 9

नसतं. कुठे असतो हा आनंद? कुठे नसतो हा आनंद? आनंदी आनंद गडे, जिकडे तिकडे चोहीकडे! ही फक्त कविकल्पनाच नव्हे, तेच सत्य आहे, किंबहुना शाश्वत सत्य आहे!

आनंदाची गंमत अशी आहे, की तुम्ही शोधू लागलात, की तो दडून बसतो, पकडू गेलात, की हातातून निसटतो. आनंदासाठी जितका आटापिटा कराल, तितका तो हुलकावण्या देतो. जितका सहजपणे घ्याल, तितका आनंद सहज प्राप्त होतो. आनंद असतोच. तो अनुभवता मात्र यावा लागतो.

आनंदाच्या बाबतीत कळसा काखेत असूनही आपण गावाला वळसा घालीत असतो. आनंद आपण बाहेर शोधत असतो आणि तो मात्र आत असतो. आनंद आपल्या मनातच असतो. आनंदाच्या झऱ्याचा उगम आपल्या अंतरंगातच असतो.

हे खरं आहे, की आनंद सर्वत्र असतो; पण अंतरंगात आनंद असेल, तरच तो अनुभवता येतो. आनंदाचं नातं जुळतं, ते फक्त आनंदाशी. आनंदाला आकर्षित करतो, तो फक्त आनंदच.

(३) स्वमत अभिव्यक्ती -

(४)

'आनंदाच्या झऱ्याचा उगम आपल्या अंतरंगातच असतो', या विधानाबाबत तुमचे मत स्पष्ट करा.

किंवा

'आनंदाची तुमची संकल्पना' तुमच्या शब्दांत लिहा.

(आ) खालील उताऱ्याच्या आधारे सूचनेनुसार कृती करा :

(८)

(१) लेखकाने शक्तिप्रदर्शन करताना दिलेल्या धमक्या -

(२)

(य) .....

(र) .....

(२) दंतवैद्याने केलेल्या दोन क्रिया -

(२)

(य) .....

(र) .....

दंतवैद्य अलीकडे फारच माणसाळलेले आहेत असे माझे प्रामाणिक मत झाले. त्याने माझ्या हिरड्यांत इंजेक्शन देऊन इतका लीलया दात उपटला, की मी आश्चर्यचकित होऊन पाहतच राहिलो ! दात उपटण्याची क्रिया इतकी सोपी असेल असे वाटले नव्हते. मी आजवर शत्रूंना आणि शेजाऱ्यांना भांडणाच्या वेळी 'दात उपटून हातात ठेवीन', 'दात घशात घालीन' अशा माझ्या शक्तीचे प्रदर्शन करणाऱ्या धमक्या दिल्या होत्या. त्यांना काहीच अर्थ नव्हता, याची हळहळ दंतवैद्याच्या खुर्चीत असतानाच वाटली.

दंतवैद्याने दात दाखवला. हाच तो खलदंत ! ज्याने माझे बायकोपुढे हसे केले तोच हा नीच दात. नतद्रष्ट ! 'तुला हेच शासन योग्य आहे' असे मी उरलेले दातओठ खाऊन मनाशी म्हणालो. आता पुन्हा तो ठणका लागणार नाही, पुन्हा ते बोळे धरावे लागणार नाहीत. पुन्हा बायकोचा उपदेश ऐकावा लागणार नाही. ह्या विचारांनी मी आनंदाने बेहोश झालो. उरलेल्या दातांना धाक बसावा म्हणून तो काढलेला दात घरी नेण्याचा विचार मनात येऊन गेला; पण त्या दाताची संगतसुद्धा नको असे वाटून मी तो दंतवैद्यालाच अर्पण केला. आनंदाने घरी आलो. दारातूनच ओरडून चार-पाच शेजाऱ्यांना सांगितले, की "तो तुम्हांला जागवणारा दात गेला. यापुढे दंतसप्ताह नाही."

(३) स्वमत अभिव्यक्ती :

(४)

'यापुढे दंतसप्ताह नाही,' लेखकाच्या या विधानाची कारणमीमांसा तुमच्या शब्दांत करा.

किंवा

दातदुखीच्या कथा-व्यथा सोदाहरण लिहा.

(इ) खालील उताऱ्याच्या आधारे सूचनेनुसार कृती करा :

(४)

(१) लेखिकेच्या मते पुढे पुढे येणाऱ्या लाटा म्हणजे -

(२)

(य) .....

(र) .....

0 2 0 9

मी वेड्यासारखी समुद्र पाहत राहायची. कधी सकाळी तर कधी चांदण्यारात्री. पाण्यावर सांडलेलं चांदणं पाहिलं की वाटायचं सगळ्या समुद्र ओंजळीत पकडावा. कसं थंड, शांत वाटायचं. मनातले सगळे विकल्प लयाला गेले असायचे. अवघं अस्तित्व निरामय होऊन जायचं. आपण आणि हा अथांग पसरलेला समुद्र ! बाकीची जाग-जाण मिटलेली असायची. अशी अभूतपूर्व शांतता मी पूर्वी कधी अनुभवलेली नव्हती. मुरुडच्या समुद्रानं मला बांधून ठेवलं. मी लिहायला लागले त्यामागे या मुरुडच्या समुद्राची फार मोठी प्रेरणा आहे. पुढे पुढे येणाऱ्या लाटा म्हणजे महत्त्वाकांक्षा, यश आणि आत्मविश्वासाचं प्रतीक वाटायच्या, तर मागे मागे सरकणाऱ्या लाटा म्हणजे पराभव, अपयश, मानहानी पचवणारी शक्ती. समुद्राच्या पोटात किती काय काय दडलं असेल ! त्यानं किती पचवलं असेल, किती सहन केलं असेल. माणसाच्या मनाचं मला ते दुसरं रूप वाटायचं. समुद्राशी माझा संवाद चालायचा.

— गिरिजा कीर

- (२) 'पाण्यावर सांडलेलं चांदणं पाहिलं' की लेखिकेची होणारी भावावस्था - (२)
- (य) .....
- (र) .....

### विभाग २ - पद्य

[१६]

- कृती २. (अ) खालील कवितेच्या आधारे सूचनेनुसार कृती करा : (८)
- (१) कवितेतील स्त्री करत असलेली विविध कामे - (२)
- (य) .....
- (र) .....
- (२) खालील अर्थाच्या ओळी कवितेतून शोधून लिहा - (२)
- (य) गोंदणाच्या हिरव्या नक्षीप्रमाणे शेत पिकाने सजवते. (१)
- (र) स्वतःचा जीवच जणू कांद्याच्या रोपाच्या रूपात लावते. (१)

सरी-वाफ्यात, कांदं लावते

बाई लावते

नाही कांदं ग, जीव लावते

बाई लावते

काळ्या आईला, हिरवं गोंदते

बाई गोंदते

रोज मातीत, मी ग नांदते

बाई नांदते

फुलं सोन्याची, झेंडू तोडते

बाई तोडते

नाही फुलं ग, देह तोडते

बाई तोडते

घरादाराला, तोरण बांधते

बाई बांधते

रोज मातीत, मी ग नांदते

बाई नांदते

ऊस लावते, बेणं दाबते

बाई दाबते

नाही बेणं ग, मन दाबते

बाई दाबते

कांड्या-कांड्यांनी, संसार सांधते

बाई सांधते

रोज मातीत, मी ग नांदते

बाई नांदते

उन्हातान्हात, रोज मरते

बाई मरते

हिरवी होऊन, मागं उरते

बाई उरते

खोल विहिरीचं, पाणी शेंदते

बाई शेंदते

रोज मातीत, मी ग नांदते

बाई नांदते

(३) अभिव्यक्ती : (४)

कुटुंबाच्या उदरनिर्वाहाकरिता कष्टकरी शेतकरी स्त्रीचे योगदान स्पष्ट करा.

(आ) खालील ओळींचा अर्थ लिहा : (४)

ह्या विंचवाला उतारा ।

तमोगुण मागें सारा ।

सत्त्वगुण लावा अंगारा ।

विंचू इंगळी उतरे झरझरां ॥

सत्त्व उतारा देऊन ।

अवघा सारिला तमोगुण ।

किंचित् राहिली फुणफुण ।

शांत केली जनार्दनं ॥

(इ) खालीलपैकी कोणतीही एक कृती सोडवा : (४)

काव्य सौंदर्य :

कोणत्या काळीं कळेना मी जगाया लागलों

अन् कुठे आयुष्य गेलें कापुनी माझा गळा !

सांगती 'तात्पर्य' माझे सारख्या खोट्या दिशा :

“चालणारा पांगळा अन् पाहणारा आंधळा !”

माणसांच्या मध्यरात्रीं हिंडणारा सूर्य मी :

माझियासाठी न माझा पेटण्याचा सोहळा !

वरील ओळींतील भावसौंदर्य स्पष्ट करा.

किंवा

रसग्रहण :

समुद्र अस्वस्थ होऊन जातो

शहराच्या आयुष्याच्या विचाराने.

तेव्हा तो मनांतल्या मनांतच मुक्त होऊन फिरूं लागतो

शहरांतल्या रस्त्यांवरून, वस्त्यांमधून.

उशिरापर्यंत रात्रीं तो बसलेला असतो

स्टेशनवरल्या बाकावर एकाकी, समोरच्या रुळांवरील रहदारी पाहत.

वरील काव्यपंक्तींचे रसग्रहण करा.

कृती ३. खालील उताऱ्याच्या आधारे सूचनेनुसार कृती करा : (४)

(अ) (१) एका वाक्यात उत्तरे लिहा :

(य) कथा उत्कर्षबिंदूपर्यंत पोहोचण्या मागील कारण लिहा. (१)

(र) कथेतील भाषायोजनेचे घटक लिहा. (१)

कथेत चांगल्या-वाईटाचा संघर्ष असतो. त्यातूनच नाट्यमयता निर्माण होते. या संघर्षातूनच कथा उत्कर्षबिंदूपर्यंत पोहोचते. कथेत प्रत्येक वेळी संघर्ष किंवा नाट्य हे वाईट घटनांचेच असते असे नाही, तर आनंद आणि सुखात्मिक घटनांतूनही नाट्यमयता निर्माण होते. कथेच्या शेवटी कथेतील अनुभवांचा, घटनांचा उत्कर्षबिंदू नाट्यपूर्णरीतीने साधता येतो; पण तरीही कथानकाच्या ओघात स्वाभाविकपणे झालेला शेवट वाचकाला आकर्षित करतो.

कथेतील संवाद हे चटपटीत, आकर्षक, वाचकाच्या भावविश्वाला स्पर्श करणारे आणि कथानकाला प्रवाही ठेवणारे असतात. पात्रांच्या स्वभावधर्मानुसार व परिस्थितीजन्य घटकांनुसार संवाद लिहिले जातात. या संवादात लय व आंतरिक संगती महत्त्वाची असते. संवादातून रसनिर्मिती आणि रसपरिपोष होत असतो. अर्थपूर्ण संवाद कथेला वेगळी उंची प्राप्त करून देतात.

कथानक भाषेच्या मदतीने साकार होत असते. कथेतील पात्रांच्या स्वभाव वैशिष्ट्यांनुसार व कथेतील वातावरणानुसार भाषेची योजना केली जाते. कथाकार, त्याचा दृष्टिकोन, त्याची अनुभव घेण्याची पद्धत यांनुसार कथेचे भाषारूप आणि शैलीविशेष निश्चित होत जातात. कथा लिहिताना साधारणतः प्रमाण भाषा आणि बोली भाषा यांची सरमिसळ केली जाते. तसेच कथा पूर्णपणे बोलीभाषेतही लिहिली जाते.

(२) कथेतील संवादाची वैशिष्ट्ये लिहा. (२)

(आ) खालीलपैकी कोणत्याही दोन कृती सोडवा :

(६)

- (य) अनु व सुनीता यांच्यात निर्माण झालेला भावनिक बंध लिहा.
- (र) बापू गुरुजींनी गावातील शाळेसाठी केलेले प्रयत्न तुमच्या शब्दांत लिहा.
- (ल) अनुच्या स्वभाव वैशिष्ट्यांचे वर्णन करा.
- (व) बोर्डिंगमधील मुलांचे बापू गुरुजींबद्दलचे प्रेम तुमच्या शब्दांत व्यक्त करा.

**विभाग ४ - उपयोजित मराठी**

[१४]

कृती ४. (अ) खालीलपैकी कोणत्याही दोन कृती सोडवा :

(४)

- (१) मुलाखत घेताना घ्यावयाची काळजी लिहा.
- (२) माहितीपत्रकाचे महत्त्व स्पष्ट करा.
- (३) अहवाल लेखनाची उपयुक्तता लिहा.
- (४) वृत्तलेखाच्या भाषेची वैशिष्ट्ये लिहा.

(आ) खालीलपैकी कोणत्याही दोन कृती सोडवा :

(१०)

- (१) खालील मुद्द्यांच्या आधारे 'मुलाखतीचा समारोप स्पष्ट करा :  
भाषिक कौशल्ये ..... परिणामकारक निवेदन ..... अनपेक्षित समारोप  
..... श्रोत्यांचा प्रतिसाद ..... मुलाखतीची यशस्विता.
- (२) खालील मुद्द्यांच्या आधारे माहितीपत्रकाची रचना वैशिष्ट्ये स्पष्ट करा :  
माहितीला प्राधान्य ..... उपयुक्तता ..... वेगळेपण ..... आकर्षक  
मांडणी ..... भाषाशैली.
- (३) खालील मुद्द्यांच्या आधारे अहवालाची प्रमुख अंगे स्पष्ट करा :  
प्रास्ताविक ..... अहवालाचा मध्य ..... अहवालाचा शेवट .....  
अहवालाची भाषा ..... अहवालाची आवश्यकता.

- (४) खालील मुद्द्यांच्या आधारे वृत्तलेख लिहितांना विचारात घ्यावयाच्या बाबी स्पष्ट करा :
- वाचकांची अभिरुची ..... तात्कालिक महत्त्व ..... वेगळेपणा  
वाचकांचे लक्ष वेधणे ..... वृत्तलेखाची शैली.

**विभाग ५ - व्याकरण व लेखन**

[२०]

व्याकरण घटक व वाक्प्रचार.

कृती ५. (अ) सूचनेनुसार कृती करा :

(१०)

(१) (य) किती आतून हसतात ती !

(१)

वरील विधानाचे विधानार्थी वाक्य ओळखून लिहा :

(१) ती आतून हसतात.

(२) ती फार हसतात आतून.

(३) ती आतून हसत राहतात.

~~(४) ती खूप आतून हसतात.~~

(२) सूचनेनुसार सोडवा :

(१)

अशी माणसं क्वचितच सापडतात.

(नकारार्थी वाक्य करा.)

(२) (य) योग्य पर्याय निवडा :

(१)

'पतिपत्नी' या सामासिक शब्दातील समास ओळखून लिहा.

(१) कर्मधारय समास

(२) विभक्ती तत्पुरुष समास

~~(३) इतरेतर द्वंद्व समास~~

(४) द्विगु समास

(२) 'नीलकंठ' या सामासिक शब्दातील समासाचे नाव लिहा.

(१)

0 2 0 9

(३) (य) योग्य पर्याय निवडा : (१)

कमलने बक्षीस मिळवले.

या वाक्यातील प्रयोग ओळखून लिहा.

(१) कर्तरी प्रयोग

~~(२) कर्मणी प्रयोग~~

(३) भावे प्रयोग

(४) यापैकी नाही

(२) योग्य पर्याय निवडा : (१)

'भावे प्रयोग' असलेले वाक्य शोधून लिहा.

~~(१) आज लवकर सांजावले.~~

(२) त्याने कपाटात पुस्तक ठेवले.

(३) युवादिनी वक्त्याने प्रेरणादायी भाषण दिले.

(४) त्याने माझ्या हिरड्यांत इंजेक्शन दिले.

(४) (य) योग्य पर्याय निवडा : (१)

जो अंबरी उफळता खुर लागलाहे ।

तो चंद्रमा निज तनूवरि डाग लाहे ॥

वरील काव्यपंक्तीतील अलंकार ओळखून लिहा.

(१) अर्थान्तरन्यास

(२) अतिशयोक्ती

~~(३) अनन्वय~~

~~(४) अपन्हृती~~

(२) न हे नयन, पाकळ्या उमलल्या सरोजांतील (१)

या वाक्यातील उपमेय ओळखा.

(५) (य) 'मुखवटा चढवणे' या वाक्प्रचाराचा अर्थ खालील पर्यायांतून ओळखून लिहा : (१)

- (१) मुळात नसलेले रूप धारण करणे.
- (२) मुखावर पांवरुण घालणे.
- (३) मुखावर लेप लावणे.
- (४) खूप मोठा पराक्रम करणे.

(र) 'मुखवटा चढवणे' या वाक्प्रचाराचा वाक्यात उपयोग करा. (१)

(आ) खालीलपैकी कोणत्याही एका विषयावर सुमारे २०० ते २५० शब्दांत निबंध लिहा : (१०)

- (१) मी अनुभवलेला पाऊस
- (२) माझा आवडता खेळाडू
- (३) मी फळा बोलतोय
- (४) पेट्रोल संपले तर .....
- (५) वाचते होऊया



DAY — 09

SEAT NUMBER

M 2 7 4 1 2 4

2023 III 03

1100

J-266

(E)

**MATHEMATICS & STATISTICS (88)**  
**(COMMERCE)**

Time : 3 Hrs.

(12 Pages)

Max. Marks : 80

**General Instructions :**

- (i) All questions are compulsory.
- (ii) There are 6 questions divided into two sections.
- (iii) Write answers of Section-I and Section-II in the same answer book.
- (iv) Use of logarithmic tables is allowed. Use of calculator is not allowed.
- (v) For L.P.P. graph paper is not necessary. Only rough sketch of graph is expected.
- (vi) Start answer to each question on a new page.
- (vii) For each multiple choice type of question, it is mandatory to write the correct answer along with its alphabetical letter eg.  
(a) ..... / (b) ..... / (c) ..... / (d) .....  
No mark(s) shall be given if "ONLY" the correct answer or the alphabet of the correct answer is written. Only the first attempt will be considered for evaluation.

0 2 6 6

## SECTION - I

Q. 1. (A) Select and write the correct answer of the following multiple choice type of questions (1 mark each) : (6)

- (i) The dual statement of the statement  $(p \vee q) \wedge (r \vee s)$  is .....
- (a)  $(p \wedge q) \wedge (r \wedge s)$       (b)  $(p \wedge q) \vee (r \wedge s)$   
(c)  $(p \vee q) \vee (r \vee s)$       (d)  $(r \vee s) \wedge (p \vee q)$

- (ii) If  $y = x \cdot \log x$  then  $\frac{dy}{dx} = \dots\dots\dots$

- (a) 1      (b)  $\frac{1}{x}$   
(c)  $\log x$       (d)  $1 + \log x$

- (iii) If  $y = 2x^2 + a^2 + 2^2$  then  $\frac{dy}{dx} = \dots\dots\dots$

- (a)  $4x$       (b)  $4x + 2a$   
(c)  $4x + 4$       (d)  $2x$

- (iv) A function  $f$  is said to be increasing at a point  $c$  if .....

- (a)  $f'(c) = 0$       (b)  $f'(c) > 0$   
(c)  $f'(c) < 0$       (d)  $f'(c) = 1$

- (v)  $\int_0^2 e^x dx = \dots\dots\dots$

- (a)  $e - 1$       (b)  $1 - e$   
(c)  $e^2 - 1$       (d)  $1 - e^2$

- (vi) The integrating factor of  $\frac{dy}{dx} + y = e^{-x}$  is .....

- (a)  $e^x$       (b)  $e^{-x}$   
(c)  $x$       (d)  $-x$

(B) State whether the following statements are true or false (1 mark each) : (3)

(i) The derivative of  $f(x) = a^x$  is  $x \cdot a^{x-1}$  where  $a$  is constant.

(ii)  $\int (1-x)^{-2} dx = (1-x)^{-1} + c$

(iii) The degree of the differential equation

$$\left(\frac{d^2y}{dx^2}\right)^2 + \left(\frac{dy}{dx}\right)^3 = a^x \text{ is } 3.$$

(C) Fill in the following blanks (1 mark each) : (3)

(i) Converse of the statement  $q \rightarrow p$  is .....

(ii) If  $y = (\log x)^2$  then  $\frac{dy}{dx} = \dots\dots$

(iii) If  $0 < \eta < 1$  then the demand is .....

Q. 2. (A) Attempt any TWO of the following questions (3 marks each) : (6) [14]

(i) Construct the truth table for the statement pattern  $(p \wedge \sim q) \leftrightarrow (q \rightarrow p)$

(ii) If  $x^5 \cdot y^7 = (x+y)^{12}$  then show that  $\frac{dy}{dx} = \frac{y}{x}$

(iii) Evaluate:  $\int \frac{1}{7+6x-x^2} dx$

(B) Attempt any TWO of the following questions (4 marks each) : (8)

(i) Solve the following equations by reduction method :

$$x + 2y + z = 8, 2x + 3y - z = 11, 3x - y - 2z = 5$$

(ii) For manufacturing  $x$  units, labour cost is ₹(150-54x) and processing cost is ₹( $x^2$ ). Price of each unit is  $P = 10800 - 4x^2$ . Find the values of  $x$  for which

- (a) Total cost is decreasing
- (b) Revenue is increasing

(iii) Evaluate :  $\int_1^3 \frac{\sqrt{x+5}}{\sqrt{x+5} + \sqrt{9-x}} dx$

**Q. 3. (A)** Attempt any TWO of the following questions (3 marks each): (6) [14

(i) Write the negation of each of the following statements :

- (a)  $\exists n \in \mathbb{N}$ ,  $(n^2 + 2)$  is odd number.
- (b) Some continuous functions are differentiable.
- (c)  $(p \rightarrow q) \vee (p \rightarrow r)$

(ii) A rod of 108 meters long is bent to form rectangle. Find its dimensions if the area of rectangle is maximum.

(iii) Evaluate :  $\int x^3 \cdot \log x dx$

**(B)** Attempt any ONE of the following questions : (4)

(i) Find the area of the region bounded by the parabola  $y^2 = 4x$  and the line  $x = 3$

(ii) Find the particular solution of the differential equation  $(x - y^2x) dx - (y + x^2y) dy = 0$  when  $x = 2, y = 0$ .

**(C)** Attempt any ONE of the following questions (Activity) : (4)

(i) If  $A = \begin{bmatrix} 4 & 3 & 2 \\ -1 & 2 & 0 \end{bmatrix}$ ,  $B = \begin{bmatrix} 1 & 2 \\ -1 & 0 \\ 1 & -2 \end{bmatrix}$

Find  $(AB)^{-1}$  by adjoint method.

Solution :

$$AB = \begin{bmatrix} 4 & 3 & 2 \\ -1 & 2 & 0 \end{bmatrix} \cdot \begin{bmatrix} 1 & 2 \\ -1 & 0 \\ 1 & 2 \end{bmatrix}$$

$$AB = \boxed{\quad}$$

$$|AB| = \boxed{\quad}$$

$$\begin{aligned}
 M_{11} &= -2 & \therefore A_{11} &= (-1)^{1+1} \cdot (-2) = -2 \\
 M_{12} &= -3 & A_{12} &= (-1)^{1+2} \cdot (-3) = 3 \\
 M_{21} &= 4 & A_{21} &= (-1)^{2+1} \cdot (4) = -4 \\
 M_{22} &= 3 & A_{22} &= (-1)^{2+2} \cdot (3) = 3
 \end{aligned}$$

$$\text{Cofactor Matrix } [A_{ij}] = \begin{bmatrix} -2 & 3 \\ -4 & 3 \end{bmatrix}$$

$$\text{adj}(A) = \begin{bmatrix} \phantom{0} & \phantom{0} \\ \phantom{0} & \phantom{0} \end{bmatrix}$$

$$A^{-1} = \frac{1}{|A|} \cdot \text{adj}(A)$$

$$A^{-1} = \begin{bmatrix} \phantom{0} & \phantom{0} \\ \phantom{0} & \phantom{0} \end{bmatrix}$$

- (ii) In a certain culture of bacteria, the rate of increase is proportional to the number present. If it is found that the number doubles in 4 hours, find the number of times the bacteria are increased in 12 hours.

Solution :

Let  $N$  be the number of bacteria present at time ' $t$ '. Since the rate of increase of  $N$  is proportional to  $N$ , the differential equation can be written as –

$$\frac{dN}{dt} \propto N$$

$$\therefore \frac{dN}{dt} = KN$$

where  $K$  is constant of proportionality

$$\therefore \frac{dN}{N} = K \cdot dt$$

$$\therefore \int \frac{1}{N} dN = K \int 1 \cdot dt$$

$$\therefore \log N = \begin{bmatrix} \phantom{0} & \phantom{0} \end{bmatrix} + C \quad \dots\dots\dots(1)$$

when  $t = 0$ ,  $N = N_0$  where  $N_0$  is initial number of bacteria.

$$\therefore \log N_0 = K \times 0 + C$$

$$\therefore C = \log N_0$$

Also when  $t = 4$ ,  $N = 2N_0$

$$\therefore \log(2N_0) = K \cdot 4 + \boxed{\phantom{00}} \dots\dots \text{from (1)}$$

$$\therefore \log\left(\frac{2N_0}{N_0}\right) = 4K,$$

$$\therefore \log 2 = 4K$$

$$\therefore K = \boxed{\phantom{00}} \dots\dots (2)$$

Now  $N = ?$  when  $t = 12$

from (1) and (2)

$$\log N = \frac{1}{4} \log 2 \cdot (12) + \log N_0$$

$$\log N - \log N_0 = 3 \log 2$$

$$\therefore \log\left(\frac{N}{N_0}\right) = \boxed{\phantom{00}}$$

$$\therefore N = 8N_0$$

$\therefore$  Bacteria are increased 8 times in 12 hours.

## SECTION - II

**Q. 4. (A)** Select and write the correct answer of the following multiple choice type of questions (1 mark each) : [12] (6)

- (i) The sum due is also called as \_\_\_\_.
- (a) Face value                      (b) Present value  
(c) Cash value                      (d) True discount
- (ii) \_\_\_\_ is a series of cash flows over a limited period of time.
- (a) Policy value                      (b) Annuity  
(c) Present value                      (d) Future value

- (iii)  $b_{yx}$  is \_\_\_\_.
- Regression coefficient of  $y$  on  $x$
  - Regression coefficient of  $x$  on  $y$
  - Correlation coefficient between  $x$  and  $y$
  - Covariance between  $x$  and  $y$
- (iv) The complicated but efficient method of measuring trend of time series is \_\_\_\_.
- graphical method
  - method of moving average
  - method of least squares
  - method of addition
- (v) Quantity index number by Weighted Aggregate Method is given by \_\_\_\_.

(a)  $\sum \frac{q_1 w}{q_0 w} \times 100$       (b)  $\sum \frac{q_0 w}{q_1 w} \times 100$

(c)  $\frac{\sum q_0 w}{\sum q_1 w} \times 100$       (d)  $\frac{\sum q_1 w}{\sum q_0 w} \times 100$

- (vi) If the corner points of the feasible region are  $(0, 0)$ ,  $(3, 0)$ ,  $(2, 1)$  and  $(0, 7/3)$ , then maximum value of  $z = 4x + 5y$  is \_\_\_\_.

- 12
- 13
- $\frac{35}{3}$
- 0

**(B)** State whether the following statements are true or false (3)

(1 mark each):

- The banker's discount is also called true discount.
- Laspeyre's Price Index Number uses current year's quantities as weights.

(iii) In an assignment problem, if number of columns is greater than number of rows, then a dummy column is added.

(C) Fill in the blanks (1 mark each):

(3)

(i) The date by which the buyer is legally allowed to pay the amount is known as \_\_\_\_\_.

(ii) Walsch's Price Index Number is given by \_\_\_\_\_.

(iii) Graphical solution set of the inequations  $x \geq 0$  and  $y \leq 0$  lies in \_\_\_\_\_ quadrant.

Q. 5. (A) Attempt any TWO of the following questions (3 marks each): (6) [11

(i) An agent places insurance for ₹ 4,00,000 on life of a person. The premium is to be paid annually at the rate of ₹35 per thousand per annum. Find the agent's commission at 15% on the premium.

(ii) For a bivariate data :

$$\sum (x - \bar{x})^2 = 1200, \quad \sum (y - \bar{y})^2 = 300$$

$$\sum (x - \bar{x})(y - \bar{y}) = -250$$

Find : (a)  $b_{yx}$  (b)  $b_{xy}$  (c) Correlation coefficient between  $x$  and  $y$ .

(iii) The following table shows gross capital information (in Crore ₹) for years 1966 to 1975 :

Years	1966	1967	1968	1969	1970
Gross Capital information	20	25	25	30	35
Years	1971	1972	1973	1974	1975
Gross Capital information	30	45	40	55	65

Obtain trend values using 5-yearly moving values.

(B) Attempt any TWO of the following questions  
(4 marks each) :

(8)

- (i) Solve the following LPP by graphical method :  
Maximize :  $z = 4x + 6y$   
Subject to  $3x + 2y \leq 12, x + y \geq 4,$   
 $x \geq 0, y \geq 0.$

- (ii) A marketing manager has list of salesmen and territories. Considering the travelling cost of the salesmen and the nature of the territory, the marketing manager estimates the total of cost per month (in thousand rupees) for each salesman in each territory. Suppose these amounts are as follows :

Salesman	Territories				
	I	II	III	IV	V
A	11	16	18	15	15
B	7	19	11	13	17
C	9	6	14	14	7
D	13	12	17	11	13

Find the assignment of salesman to territories that will result in minimum cost.

- (iii) A random variable  $X$  has the following probability distribution :

$x$	1	2	3	4	5	6	7
$P(x)$	$k$	$2k$	$2k$	$3k$	$k^2$	$2k^2$	$7k^2+k$

Find : (a)  $k$  (b)  $P(X < 3)$  (c)  $P(X > 4)$

Q. 6. (A) Attempt any TWO of the following questions (3 marks each) : (6) [14]

- (i) An agent was paid ₹ 88,000 as commission on the sales of computers at the rate of 12.5%. If the price of each computer was ₹ 32,000, how many computers did he sell?

- (ii) The publisher of a magazine wants to determine the rate of increase in the number of subscribers. The following table shows the subscription information for eight consecutive years :

Years	1976	1977	1978	1979
No. of subscribers (in millions)	12	11	19	17
Years	1980	1981	1982	1983
No. of subscribers (in millions)	19	18	20	23

Fit a trend line by graphical method.

- (iii) If  $x$  follows Poisson distribution such that  $P(x = 1) = 0.4$  and  $P(x = 2) = 0.2$ , find variance of  $x$ .

(B) Attempt any ONE of the following questions : (4)

- (i) From the following data, find the regression equation of  $y$  on  $x$  and estimate  $y$  when  $x = 4$  :

$x$	1	2	3
$y$	2	1	6

- (ii) Calculate Marshall – Edgeworth's price index number for the following data :

Commodity	Base year		Current year	
	Price	Quantity	Price	Quantity
P	12	20	18	24
Q	14	12	21	16
R	8	10	12	18
S	16	15	20	25

(C) Attempt any ONE of the following questions (Activity): (4)

- (i) Six jobs are performed on Machines  $M_1$  and  $M_2$  respectively. Time in hours taken by each job on each machine is given below :

<b>Jobs</b> →	<b>A</b>	<b>B</b>	<b>C</b>	<b>D</b>	<b>E</b>	<b>F</b>
<b>Machines</b> ↓						
$M_1$	3	12	5	2	9	11
$M_2$	8	10	9	6	3	1

Determine the optimal sequence of jobs and find total elapsed time. Also find the idle time for machines  $M_1$  and  $M_2$ .

Solution :

Given jobs can be arranged in optimal sequence as,

D	A	C	B	E	F
---	---	---	---	---	---

Jobs	Machine $M_1$		Machine $M_2$	
	In	Out	In	Out
D	0	2	<input type="text"/>	8
A	2	5	8	16
C	5	10	16	25
B	10	22	25	35
E	22	31	35	38
F	31	42	<input type="text"/>	43

Total Elapsed time =  hrs.

Idle time for Machine  $M_1 = 43 - 42 = 1$  hour.

Idle time for Machine  $M_2 =  hrs.$

- (ii) A pair of dice is thrown 3 times. If getting a doublet is considered a success, find the probability of getting at least two success.

Solution :

A pair of dice is thrown 3 times

$$\therefore n = 3$$

Let  $x$  = number of success (doublets)

$p$  = probability of success (doublets)

$$\therefore p = \boxed{\quad}, \quad q = \boxed{\quad}$$

$$\therefore x \sim B(n, p)$$

$$P(x) = {}^n C_x p^x q^{n-x}$$

Probability of getting at least two success means

$$x \geq 2.$$

$$\therefore P(x \geq 2) = P(x = 2) + P(x = 3)$$

$$= \boxed{\quad} + \boxed{\quad}$$

$$= \frac{2}{27}$$



DAY — 05

SEAT NUMBER

2 7 4 1 2 4

2023 II 25

1100

J-228

(E)

**ORGANISATION OF COMMERCE  
AND MANAGEMENT (51)**

Time : 3 Hrs.

(4 Pages)

Max. Marks : 80

- Note :** (i) All questions are compulsory.  
(ii) Figures to the right indicate full marks for the questions.  
(iii) Figures to the left indicate question numbers.  
(iv) Answer to every question must be started on a new page.

**Q. 1. (A)** Select the correct option and rewrite the sentences : (5) [20]

- (1) Scalar chain means the hierarchy of \_\_\_\_\_ from the top level to the lower level for the purpose of communication.  
(a) discipline (b) unity  
(c) authority
- (2) \_\_\_\_\_ warehouses provide facilities for perishable commodity.  
(a) Bonded (b) Cold storage  
(c) Government
- (3) For online transactions \_\_\_\_\_ is required.  
(a) registration (b) trading  
(c) business
- (4) The President of District Forum is \_\_\_\_\_.  
(a) District Judge (b) High Court Judge  
(c) Supreme Court Judge
- (5) Retail market is the market where retailer sells goods directly to the \_\_\_\_\_ in small quantities.  
(a) producer (b) wholeseller  
(c) consumer

0 2 2 8

**(B)** Match the correct pairs : (5)

Group 'A'

- (a) Henry Fayol
- (b) Directing
- (c) Responsibility towards Government
- (d) Digital cash
- (e) Monopoly

Group 'B'

- (1) It is the process of instructing, guiding, communicating and motivating
- (2) Scientific Management theory
- (3) It is the process of recruiting, selecting, placing and remunerating
- (4) To earn profit
- (5) Respecting rules and regulations
- (6) Exist only in cyber space
- (7) Exist everywhere
- (8) Single buyer
- (9) Modern management theory
- (10) Single seller

**(C)** State whether the following statements are true or false : (5)

- (1) F.W. Taylor has proposed 14 principles of management.
- (2) Current account is opened by salaried persons.
- (3) Unregulated market operates according to forces of demand and supply.
- (4) Consumer being the king of market does not have any responsibility.
- (5) Lok Adalat can rightly be described as "People's Court".

**(D)** Find the odd one : (5)

- (1) Planning, Organising, Staffing, Writing
- (2) Trekking, Wildlife Study, Horseback riding, Indoor games.
- (3) Primary credit co-operative society, State co-operative bank, District co-operative bank, Exchange bank.

- (4) B to B, B to C, A to Z, C to C
- (5) Stock exchange, Foreign exchange, Bullion market, Manufactured goods market.

**Q. 2. Explain the following terms / concepts (Any FOUR) :** [8]

- |                            |                     |
|----------------------------|---------------------|
| (1) Management             | (4) Janahit yachika |
| (2) Social responsibility  | (5) Packaging       |
| (3) Concept of trusteeship | (6) Product         |

**Q. 3. Study the following case / situation and express your opinion (Any TWO) :** [6]

(1) Mr. Ram, an emerging entrepreneur has designed a structure of his business organisation by taking into consideration the required resources such as land, money, machinery, work-force etc. for his new business. He appointed Mr. Shyam as a manager. Mr. Ram has assigned the responsibilities such as recruitment, selection, training and development and to determine the remuneration of the employees to Mr. Shyam. Mr. Ram has also appointed Mr. Shubham to supervise the work done by the employees according to the standards given to the employees. Mr. Shubham has to also suggest the remedies to the employees wherever necessary. On this context, find out the management functions performed by :

- |                 |               |
|-----------------|---------------|
| (a) Mr. Ram     | (b) Mr. Shyam |
| (c) Mr. Shubham |               |

(2) Mr. Amit is a businessman. He has his own factories in Pune and Nashik. He lives in Pune with his wife and 2 daughters aged 5 and 8 years.

- (1) Can Mr. Amit take a life insurance policy for his wife and 2 children?
- (2) Can Mr. Amit take a marine insurance policy for his factories?
- (3) Which type of insurance should Mr. Amit take for protecting his factories from loss due to fire?

- (3) Mr. Atharva made his payment by cheque at the same time  
Mr. Samarth made his payment by fund transfer :
- Whose payment is faster?
  - Whose payment is related to traditional business?
  - Whose payment is related to e-business?

**Q. 4. Distinguish between the following (Any THREE) :** [12]

- Current Account and Fixed Deposit Account.
- Organising and Directing.
- State commission and National Commission.
- E-Commerce and E-Business.

**Q. 5. Answer in brief (Any TWO) :** [8]

- Describe any four techniques of scientific management.
- Explain any four needs of consumer protection.
- Explain any four functions of marketing.

**Q. 6. Justify the following statements (Any TWO) :** [8]

- Controlling is the last function of management.
- Entrepreneurship is the best source for self employment.
- Cash can be withdrawn from ATM at any time.
- Consumers have many responsibilities.

**Q. 7. Attempt the following (Any TWO) :** [10]

- Explain nature of principle of management.
- State money remittance services and retail services of postal department.
- Explain social responsibilities of commercial organisation towards consumers.

**Q. 8. Answer the following (Any ONE) :** [8]

- What is Road Transport? Explain the advantages and disadvantages of Road Transport.
- Explain importance of Marketing to the society and consumers.





2023 II 28

1100

J-241

(E)

**SECRETARIAL PRACTICE (52)**

Time : 3 Hrs.

(4 Pages)

Max. Marks : 80

- Note :** (1) All questions are compulsory.  
(2) Figures to the right indicate full marks for the questions.  
(3) Figures to the left indicate question numbers.  
(4) Answer to every question must be started on a new page.

**Q. 1. (A)** Select the correct answer from the options given below and rewrite the sentences : (5) [20]

- (1) Company has to pay \_\_\_\_\_ to government.  
(a) taxes (b) dividend (c) interest
- (2) \_\_\_\_\_ shares are issued free of cost to existing equity shareholders.  
(a) Equity (b) Right (c) Bonus
- (3) \_\_\_\_\_ is a proof of title of shares.  
(a) Register of member  
(b) Share certificate  
(c) Letter of Allotment
- (4) Debenture Capital is a \_\_\_\_\_ capital of a company.  
(a) owned (b) permanent (c) borrowed
- (5) Dividend is paid first to \_\_\_\_\_ shareholders.  
(a) equity (b) preference (c) deferred

0	2	4	1
---	---	---	---

(B) State whether the following statements are True or False : (5)

- (1) Finance is related to money and money management.
- (2) Share certificate is issued for partly or fully paid up shares.
- (3) Government company can collect deposits from its members.
- (4) Depositors are given voting rights.
- (5) Primary market is also known as new issue market.

(C) Find the odd one : (5)

- (1) Face value, Market value, Redemption value.
- (2) Convertible debentures, Irredeemable debentures, Secured debentures.
- (3) Dividend warrant, Interest warrant, Demat.
- (4) DP, RBI, Depository.
- (5) Final dividend, Interim dividend, Interest.

(D) Select the correct option from the bracket. (5)

Group 'A'	Group 'B'
(a) Equity shares	(1) _____
(b) Operation of law	(2) _____
(c) _____	(3) Debenture certificate
(d) Dematerialization	(4) _____
(e) _____	(5) Oldest stock exchange in India.

[Issued within 6 months of allotment, Physical to electronic mode, Fluctuating rate, of dividend, Bombay Stock Exchange, Transmission of shares]

Q. 2. Explain the following terms / concepts (Any FOUR) :

[8]

- (1) Working Capital
- (2) Overdraft
- (3) Rights issue
- (4) Depository Participant (DP)
- (5) Secondary Market
- (6) Stock Exchange

**Q. 3. Study the following cases / situations and express your opinion (Any TWO) :**

[6]

- (1) Sai Ltd. Company is newly incorporated public company and wants to raise capital by selling equity shares to the public. The Board of Directors are considering various options for this. Advise the Board on the following matters:
  - (a) What should the company offer - IPO or FPO?
  - (b) Can the company offer Bonus shares to raise its capital?
  - (c) Can the company enter into Underwriting Agreement?
- (2) Mr. Kishore wants to demat his 25 shares of Hero Company Ltd. bearing certificate no. 100 and distinctive no. 76-100 :
  - (a) Which form is he required to fill as a written request to the DP-DRF or RRF?
  - (b) Does he have to fill instrument of transfer if he wishes to transfer the same, after demat?
  - (c) Does he have to quote certificate number and distinctive number, if he wishes to transfer his shares after it is in demat form?
- (3) Diamond Company Limited is considering to declare Interim Dividend :
  - (a) In how many days of declaration it should transfer the funds to Dividend Account?
  - (b) In how many days it must pay it to Shareholders?
  - (c) Can the Board of Directors declare Interim Dividend out of capital?

**Q. 4. Distinguish between the following (Any THREE) :**

[12]

- (1) Fixed capital and Working capital.
- (2) Shares and Debentures.
- (3) Initial Public Offer (IPO) and Further Public Offer (FPO).
- (4) Final Dividend and Interim Dividend.

- Q. 5. Answer in brief (Any TWO) :** [8]
- (1) State the contents of share certificate.
  - (2) Explain four advantages of depository system for an investor.
  - (3) State the functions of SEBI.
- Q. 6. Justify the following statements (Any TWO) :** [8]
- (1) A company can issue only certain types of debentures.
  - (2) All companies cannot accept deposits from public.
  - (3) Equity shares get last priority in payment of dividend.
  - (4) Capital market is useful for corporate sector.
- Q. 7. Attempt the following (Any TWO) :** [10]
- (1) Write a letter to the member for the issue of share certificate.
  - (2) Draft a letter to debenture holder informing him about redemption of debentures.
  - (3) Draft a letter to the depositor regarding repayment of his deposit.
- Q. 8. Answer the following questions (Any ONE) :** [8]
- (1) What is an equity share? Explain its features.
  - (2) Explain the statutory provisions for allotment of shares.

